

# CeleViz™ – Empowering Easy Exploration of scRNA-seq Data

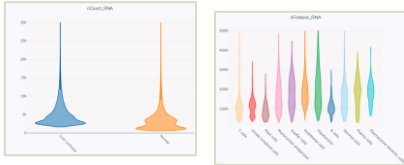
Explore and visualize your scRNA-seq datasets using our user-friendly CeleViz interface.



## What you can do with CeleViz:

- Input gene expression matrix with user-defined groupings
- Gain valuable insights into samples using in-built analysis modules
- Seamlessly compare between sample groups
- Download results and graphics in customizable formats

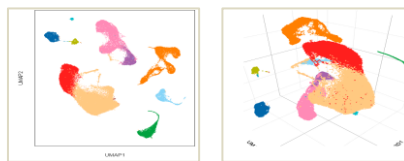
Investigate **Data Quality** and compare QC features across samples and groupings



UMI count distribution

Gene count distribution

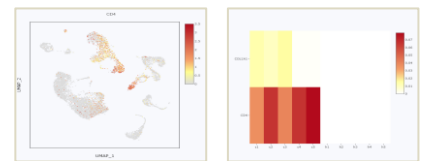
Generate **Dimensionality Reduction** plots in 2D and 3D embeddings for visualization of cell clusters



UMAP 2D

UMAP 3D

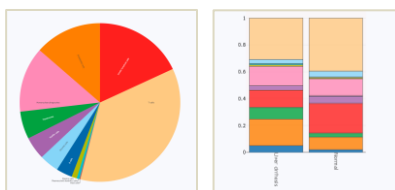
Explore **Gene Expression** of individual and multiple gene sets



Feature plot

Heatmap

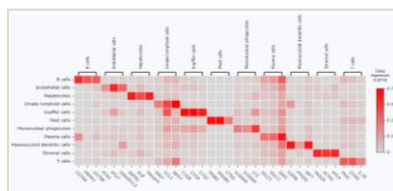
Compare **Cellular Compositions**



Pie chart

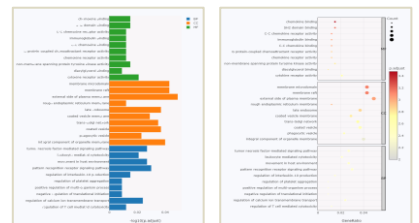
Stacked bar plot

Compute **Differentially Expressed Genes** and view top DEGs



Heatmap

Perform **Pathway enrichment** analysis on clusters or gene sets



Bar plot

Dot plot

Resources:



Tutorial video ([click](#))



Contact Support

For APAC ([click](#))

For the Americas / EMEA ([click](#))

Singleron Biotechnologies GmbH

Phone: +49 (0) 221 16824777

Address: Gottfried-Hagen-Strasse 60, 51105 Cologne Germany

Website: [singleron.bio](http://singleron.bio) Email: [info@singleronbio.com](mailto:info@singleronbio.com)

Singleron Biotechnologies Pte. Ltd. (UEN 201718919Z)

Phone: +65 6990 5987

Address: 61 Science Park Rd #02-05, Singapore 117525

Email: [sales.sg@singleron.bio](mailto:sales.sg@singleron.bio)